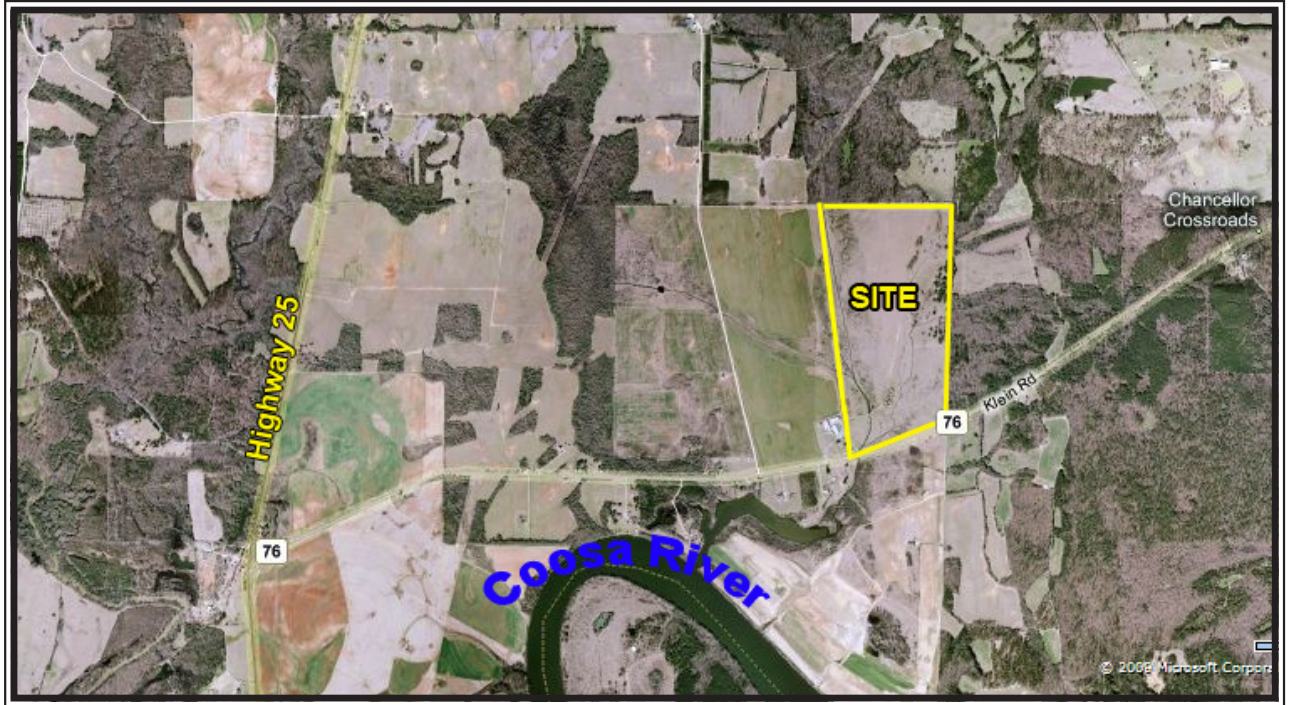
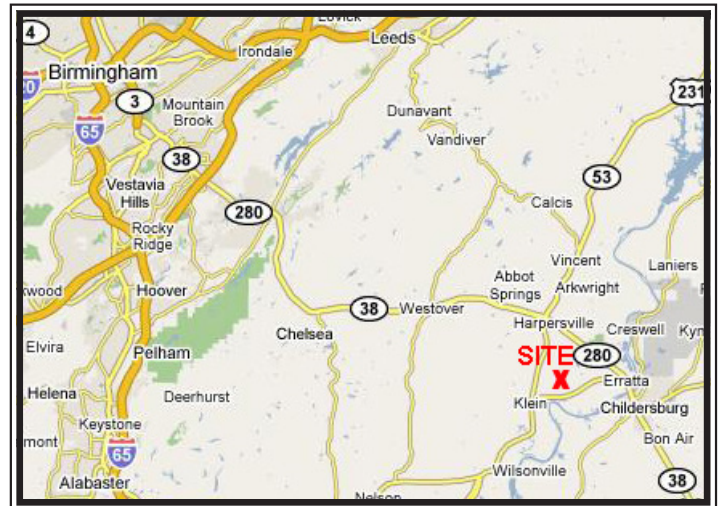


160+/- Acres - Harpersville

For Sale



- 160+/- acres flat pasture (some trees)
- \$3,260.00 per acre
- Prime fenced pasture land
- Great streams run through property
- City water
- Large contiguous land owners
- 30 minutes from Birmingham



LAH COMMERCIAL
REAL ESTATE

Information deemed reliable, but subject to verification

2850 Cahaba Road, Suite 200
Birmingham, AL 35223
Office: 205-870-8580
Fax: 205-870-7348

Bill Warren
205-960-1787
bwarren@lahcommercial.com
www.lahcommercial.com